

# MB-Camera-6X&12X External Camera

## Introduction

MB-Camera is a pluggable optical zoom camera module suitable for MeetingBoard. With 8 million pixels, a Sony image sensor, and 6/12x optical zoom. It supports manual adjustment (PTZ), camera preset, Auto Framing, Speaker Tracking, and PIP Mode. After installing the external camera, the MeetingBoard will automatically switch to use the external camera. For the operation video, please Refer to [MB-Camera](#).

## Device Compatibility

For the MB-Camera maximum number of compatible devices that can be connected to the MeetingBoard, please refer to [Zoom Room Accessories Compatibility Lists](#).

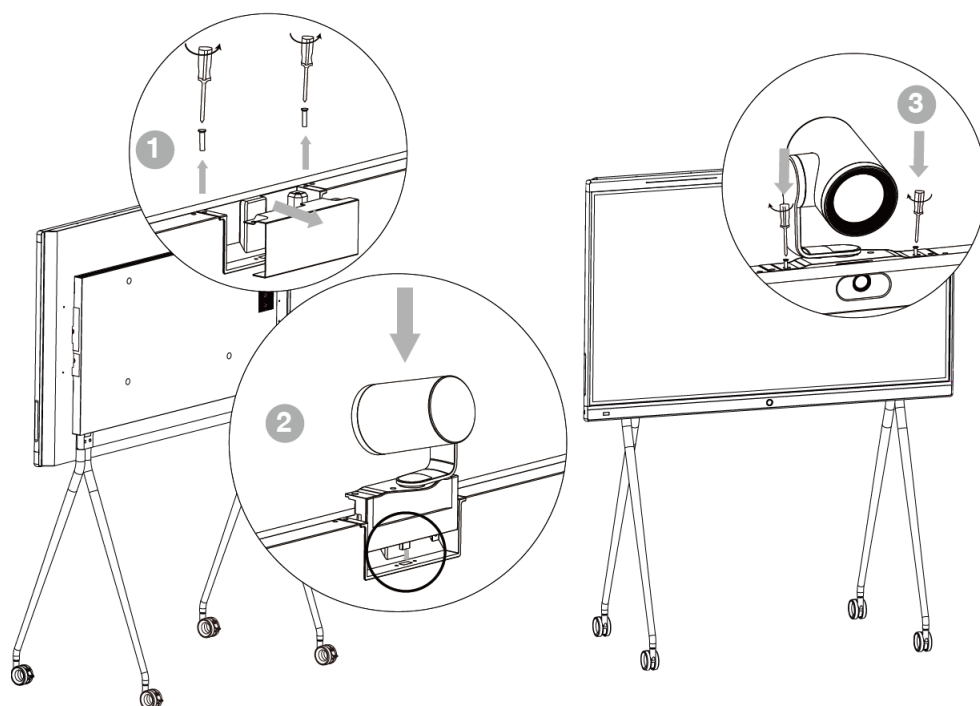
## Before You Begin

The MeetingBoard needs to be updated to version 155.15.0.37 or later to support the 6X Camera, version 155.15.0.46 or later to support the 12X Camera.

## How to Use

### Installation

Please refer to: [MB-Camera Installation](#).



## Manually Adjust Camera

Support adjusting the external cameras manually.  
For more information, please refer to [Camera Control](#).

## Set Camera Presets

The external camera supports setting and applying camera presets in a meeting.  
For more information, please refer to [Camera Preset](#).

## Auto Framing

The external camera supports the Auto Framing.  
For more information, please refer to [Auto Framing](#).

## Speaker Tracking

The external camera supports the Speaker Tracking.  
For more information, please refer to [Speaker Tracking](#).

## PiP Mode

The external camera supports the PiP Mode.  
For more information, please refer to [PiP Mode](#).

## Update

After the installation is completed, the MeetingBoard will automatically upgrade the external camera. Do not unplug or use the camera during the upgrade process, and wait for the MeetingBoard to prompt that the upgrade is complete.

## FAQ

**[Can the MeetingBoard PTZ external camera be connected to cameras other than MB-Camera?](#)**