

# Shure Mic and Camera Linkage

## Introduction

The Mic and Camera Linkage feature supports using the third-party brand Shure Ceiling microphones to use Shure Mic and Camera Linkage.

For the operation video, please refer to [Shure Microphone-Mic & Camera Linkage](#).

## How to Use

You can directly use the MTouch II matched with MVC to operate or log in to the Yealink Device Management Platform to operate remotely. For the remote control, please refer to [Remote Control](#).

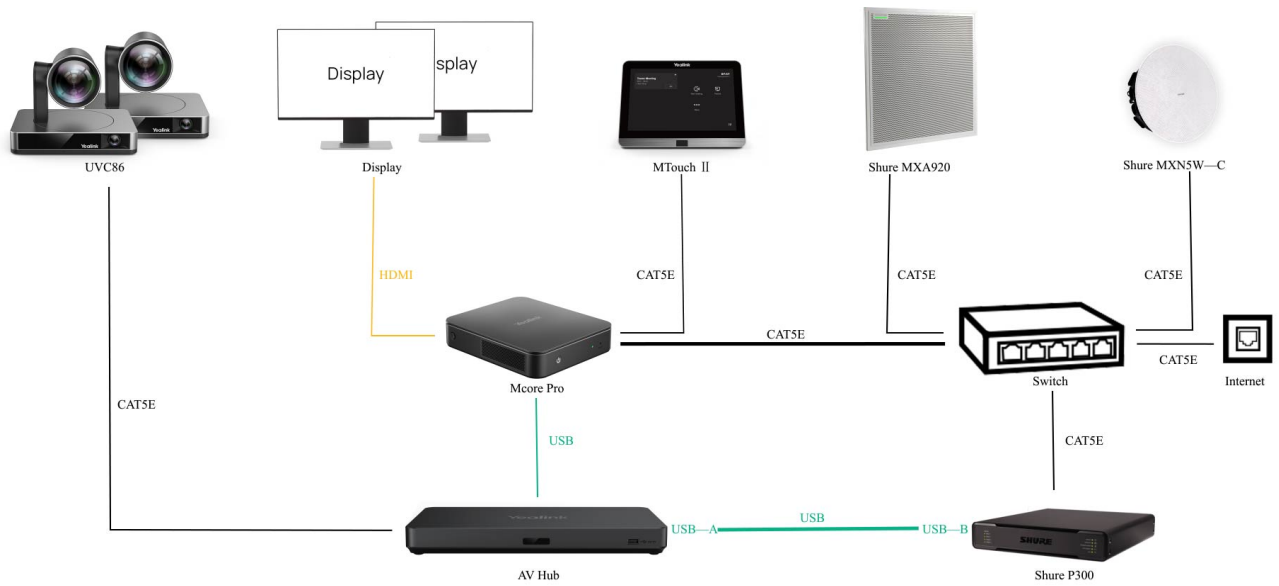
### Before you begin:

- Version Requirements:
  - AVHub: 153.430.0.15 and later
  - UVC86 Camera: 151.430.0.15 and later
  - UVC84 Camera: 262.430.0.15 and later

- The device deployment is as follows:

**NOTE**

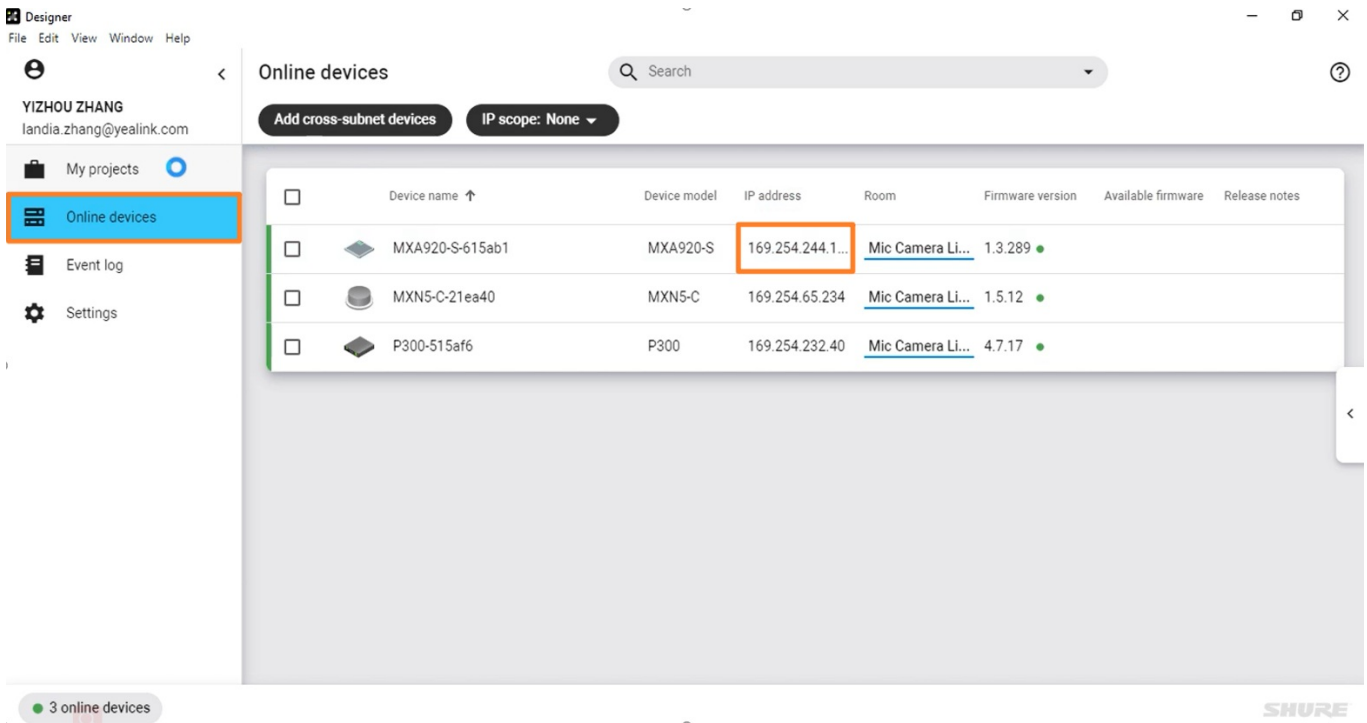
Do not connect other audio devices to AVHub after deployment. If you want to add audio devices, please connect them to Shure P300.



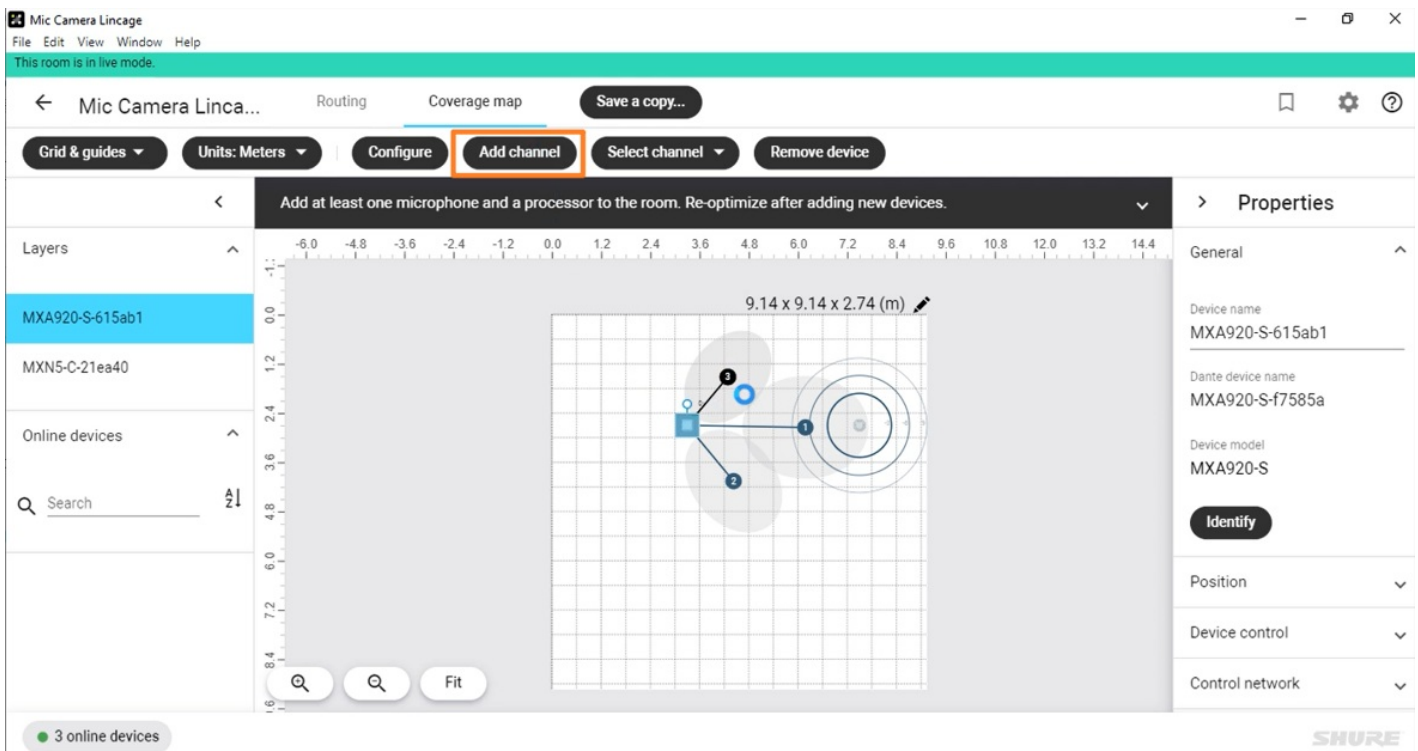
**1. Configure Microphone in Shure Design**

1. Go to **Settings** in the Shure Designer, and click **Refresh**.

2. Go to **Online device** to find the microphone's IP address in the Shure Designer.

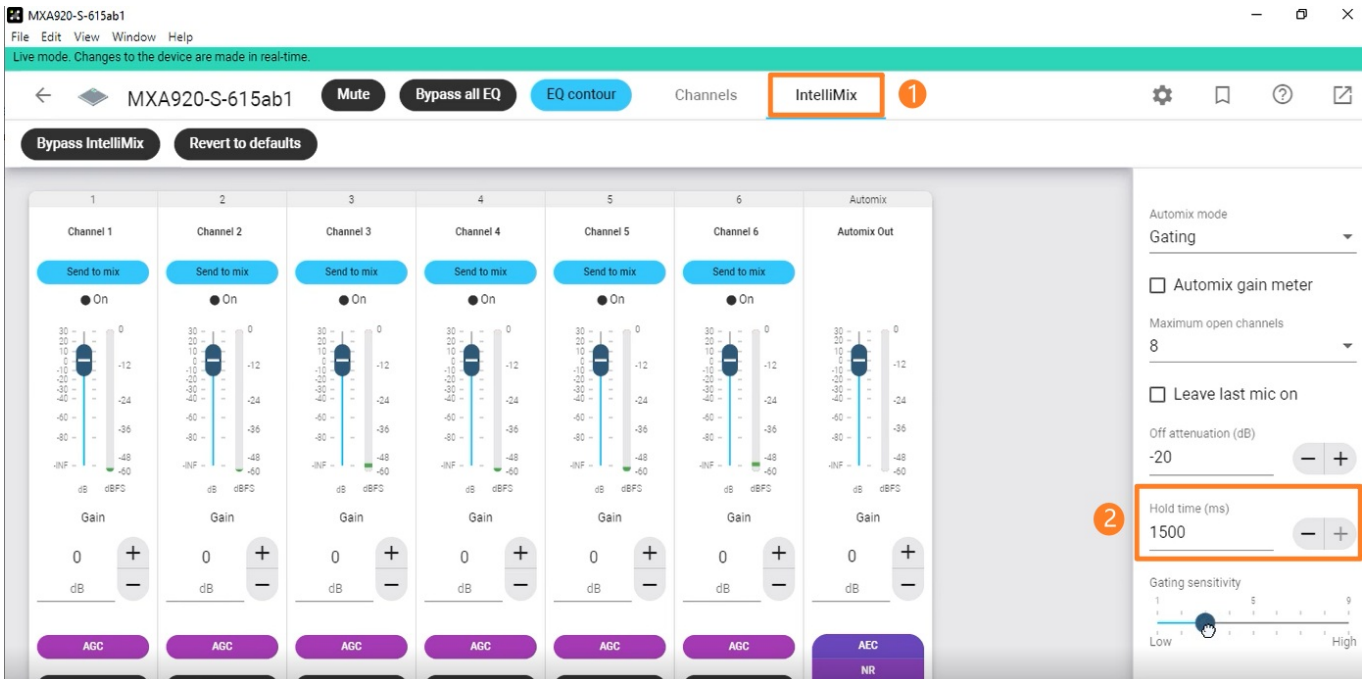


3. Create a microphone channel and set coverage.



4. Enter the microphone MXA920 menu and click the **IntelliMix** page.

Set the **Hold time** value to 1500 ms to capture better audio performance. However, switching cameras will cause a slight delay (Please confirm the meeting room' s sound environment and delay parameters, and use a shorter Hold time in a single source environment).



## 2. Configure Shure Mic and Camera Linkage in YRC

1. Open the Yealink RoomConnect application and select the AVHub card.

Go to **Mic and Camera Linkage** to enable **Mic and Camera Binding** in **Shure Mic Camera Bind**.

**Yealink RoomConnect**

← Return

AVHub

- Image Setting
- Update Device
- Device Support
- Audio Settings
- Mic and Camera Linkage
- Divisible Room

**Yealink Mic and Camera Linkage**

- Mic and Camera Linkage ?
- Mic and Camera Binding >

**Default camera layout and position** ?

- Camera Layout >
- Camera Control >

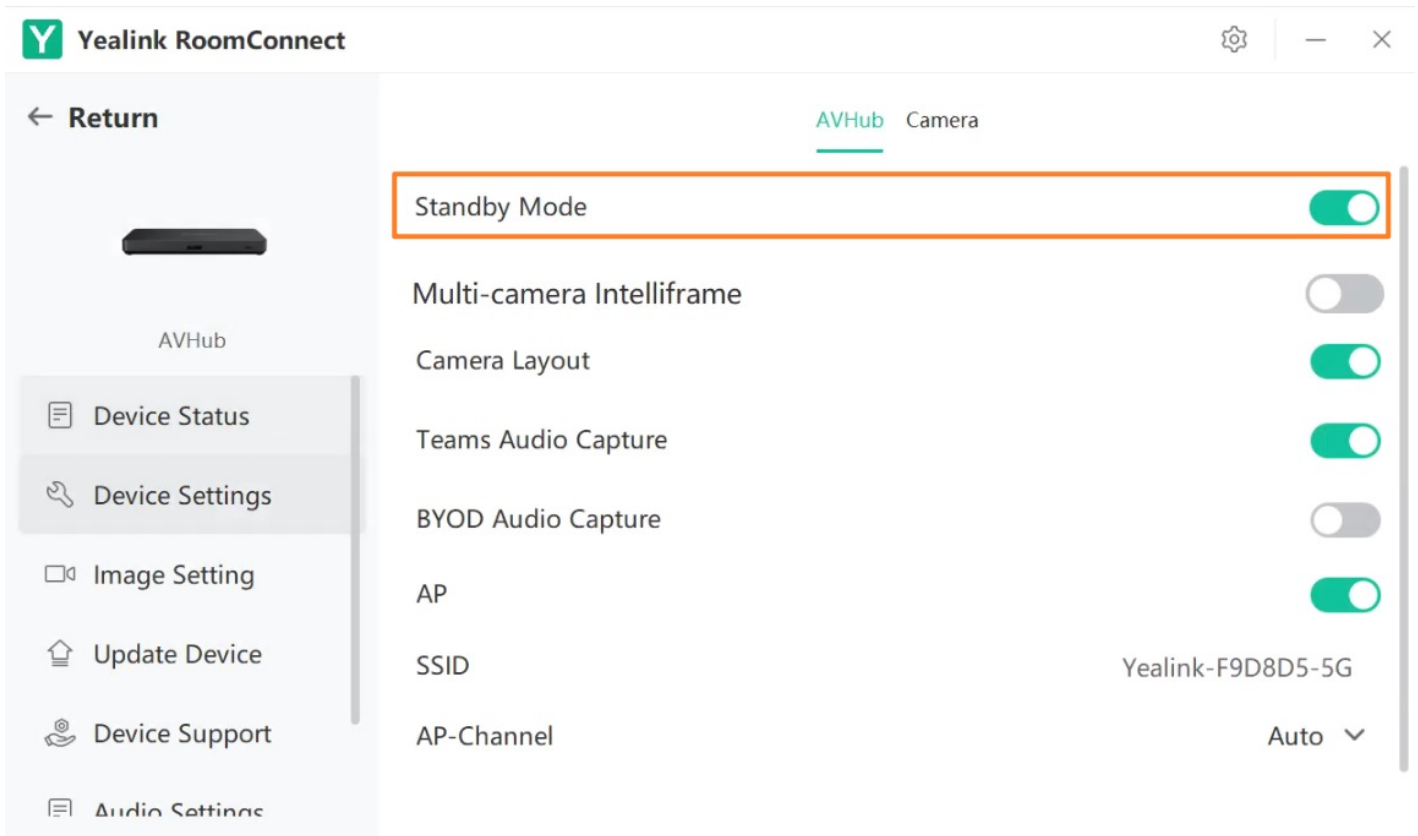
**Shure Mic Camera Bind**

- Mic and Camera Binding

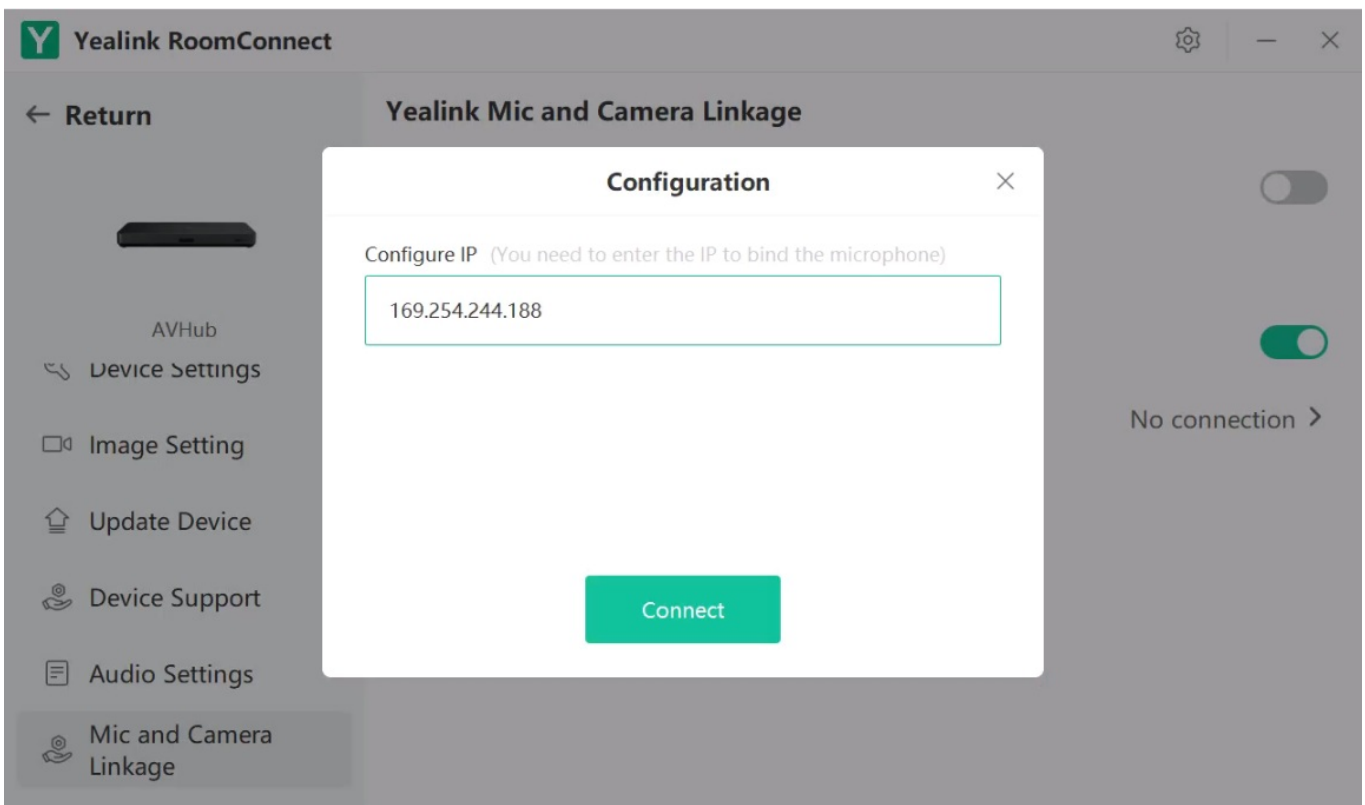
**NOTE**

The camera that has not been used for a while will enter sleep mode. When you use it again, the screen will display the picture of restarting the camera. We recommend turning on the standby mode of the camera to avoid affecting the user experience.

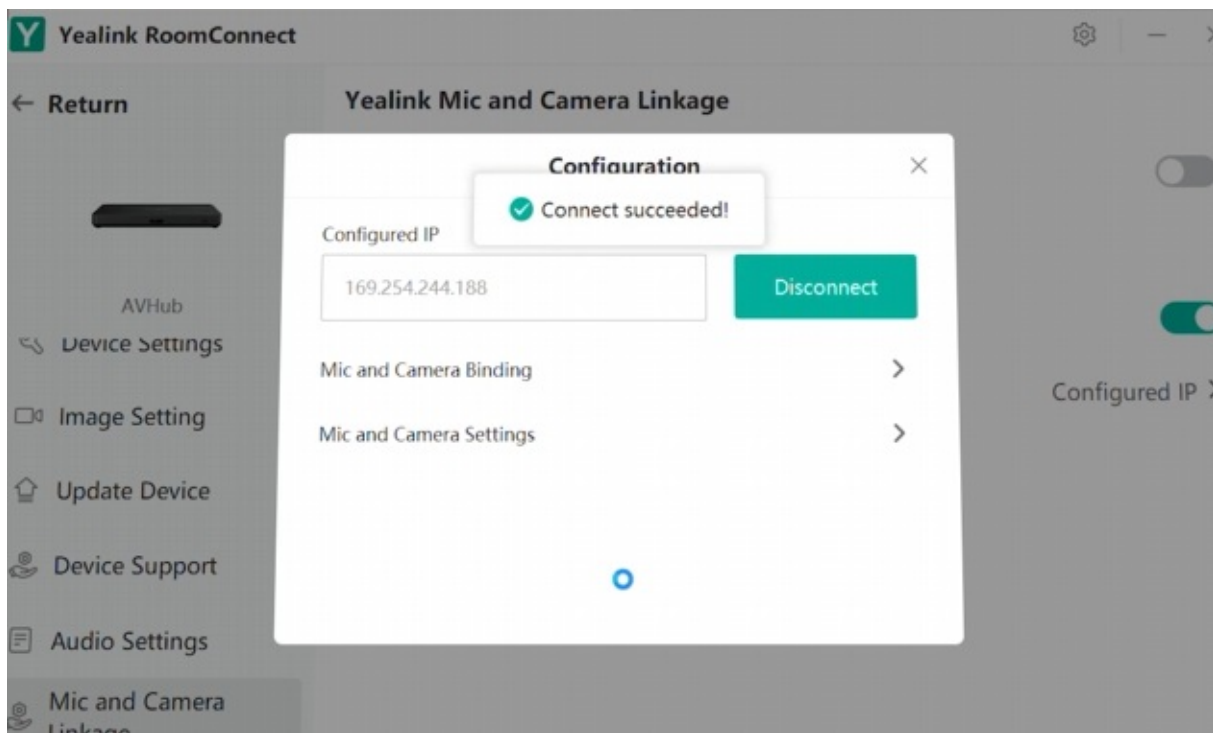
- 1). Open the Yealink RoomConnect application and select the Avhub card.
- 2). Go to **AVHub > Device Settings > AVHub > Standby mode.**



3. After enabling the Shure microphone binding, if **Not connected** is still displayed under the configuration item, click **Not connected**. Enter the IP address obtained in the first step on the configuration page, and click **Connect**.

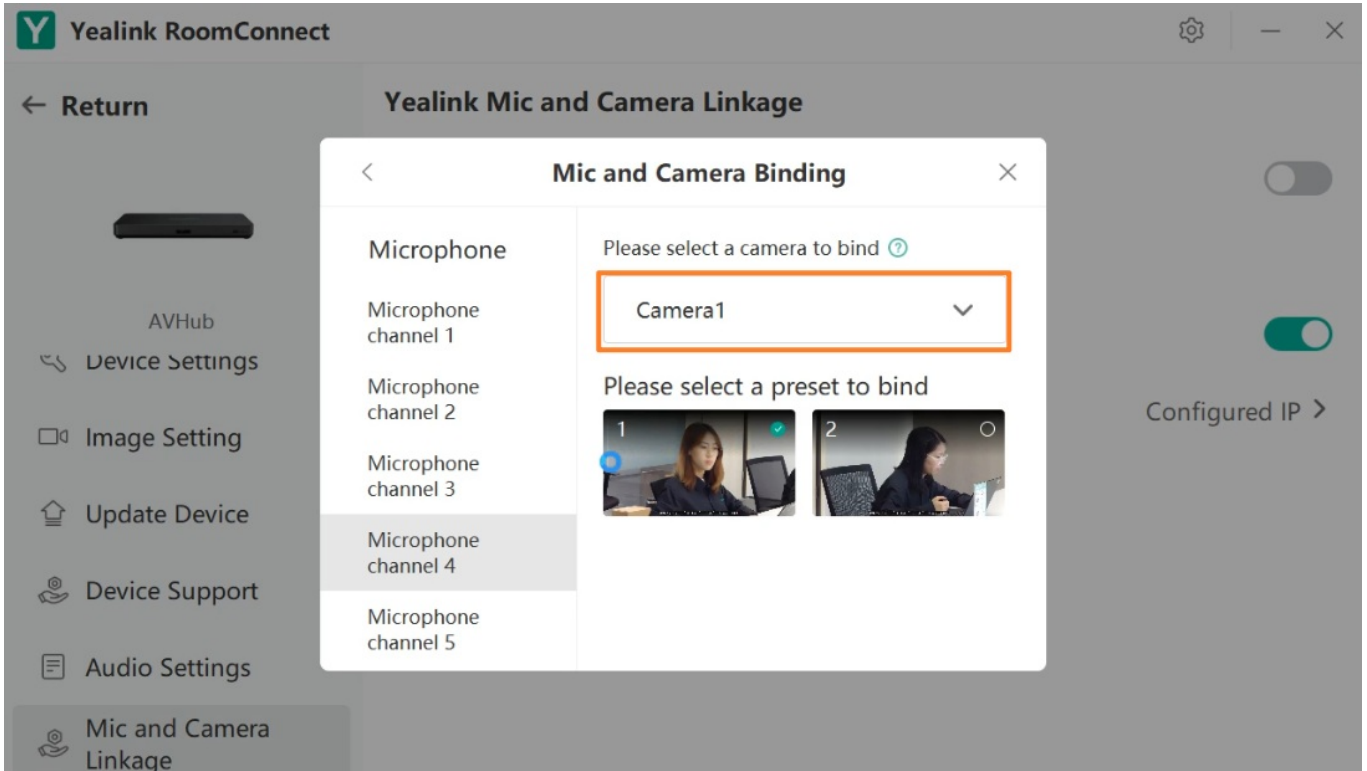


4. After the connection is successful, you can see two configuration items: **Mic and Camera Binding** and **Mic and Camera Settings**.



5. Select a microphone channel in **Mic and Camera Binding** to bind a camera.

You can set the camera preset for the bonded camera in advance or set it as a presentation tracking. If the camera preset is set in advance, you can select the camera preset to bind. The video will display the bound camera preset when the microphone channel is enabled. If the presentation tracking is set in advance, the video will display the presentation tracking when the microphone channel is enabled.



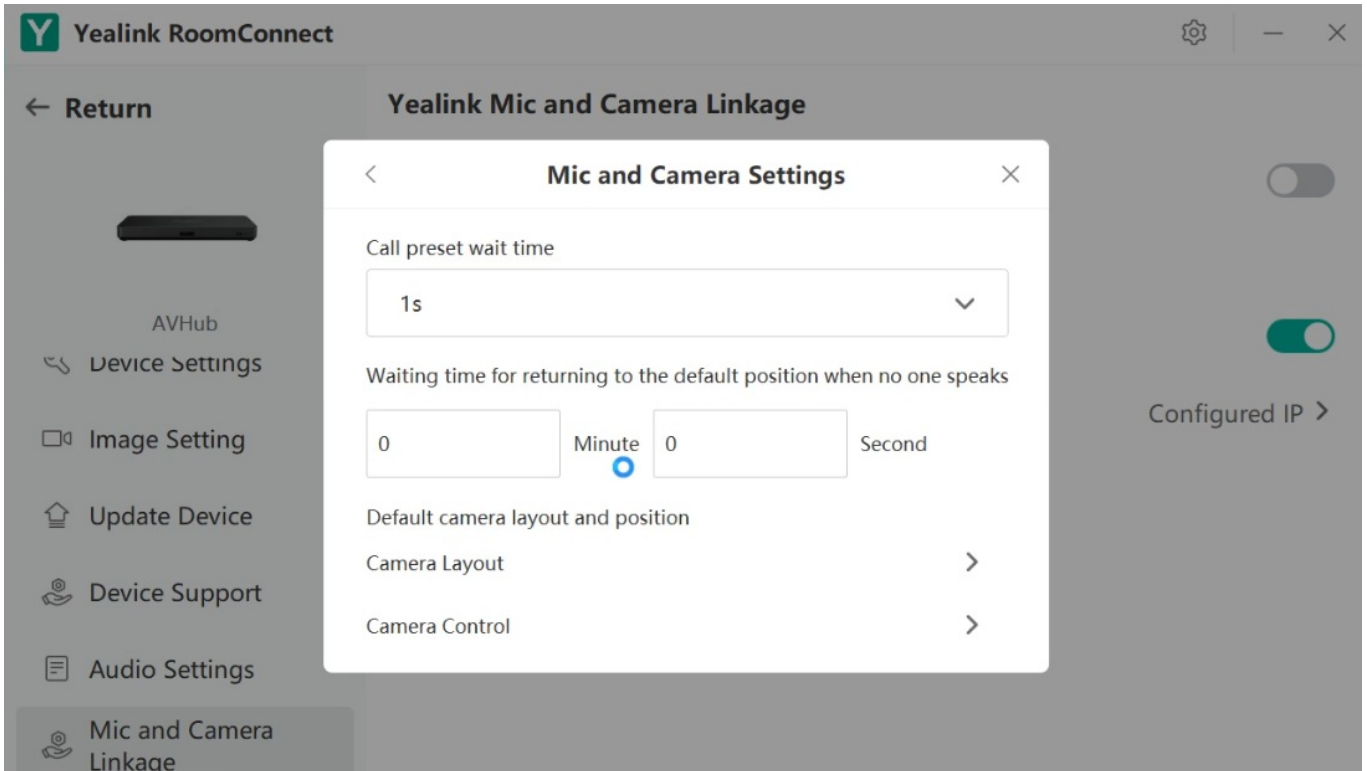


6. Click **Mic and Camera Settings** to set other configurations.

**Preset waiting time:** Set the time interval for switching the video screen each time. **Default:** 1 second, optional 0.5 - 5 seconds.

**Waiting time for returning to default position when no one speaks :** Set the time to restore the default video screen when all microphone channels are disabled.

**Default Layout:** Set the default video layout, camera angle, and focal length when all microphone channels are disabled.



7. After setting, click **Preview** or **Finish**.

