

# MCore Pro Installation

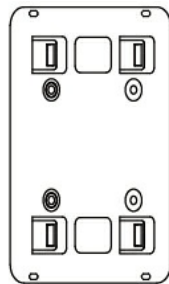
## Package Contents

**TIP**

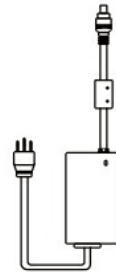
We recommend that you use the accessories provided or approved by Yealink. The use of unapproved third-party accessories may result in poor performance.



MCore Pro



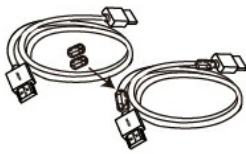
(150\*117\*15mm)  
Bracket



(2.1m, 6.89ft)  
Power Adapter  
(19V/4.74A)



Quick Start Guide



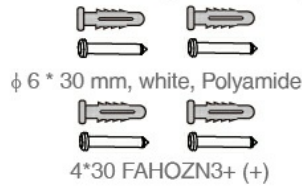
(1.8 m, 5.91 ft)

HDMI Cable(x3)



(W25.4\*L50mm,3M)

Velcro(x2)



Expansion Screw (x4)  
Self-tapping Screw(x4)



3\*6PMOZN3+

Machine  
Screw(x2)

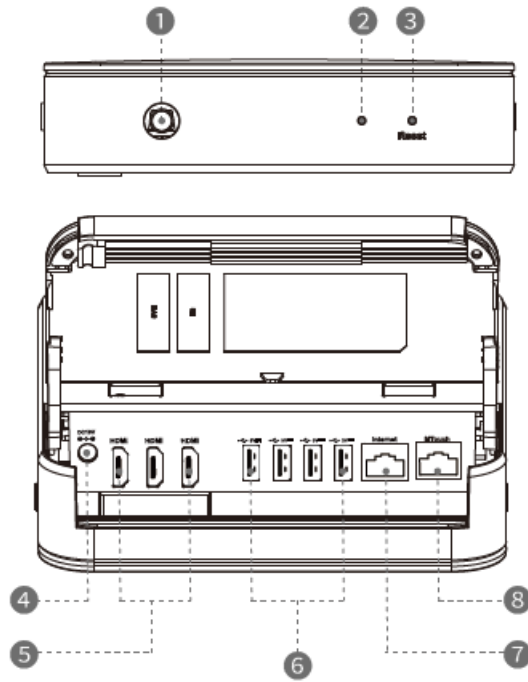


(WH-85\*3.0mm)

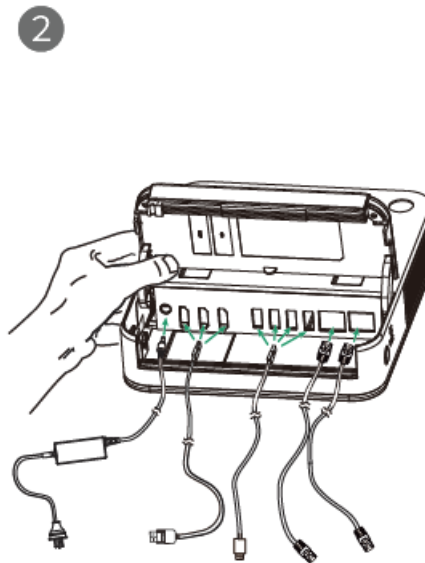
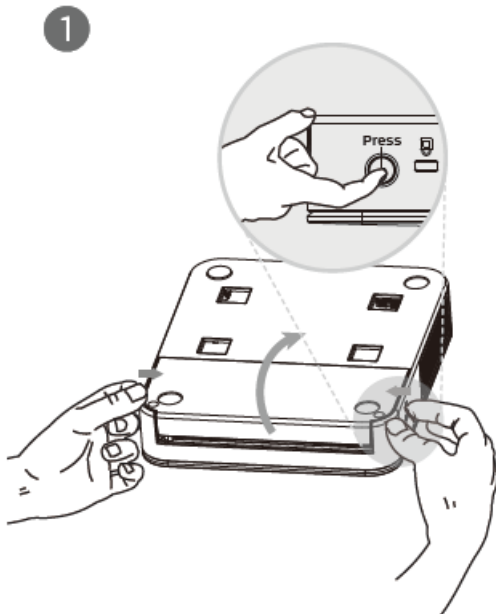
Screwdriver

## Hardware Interface

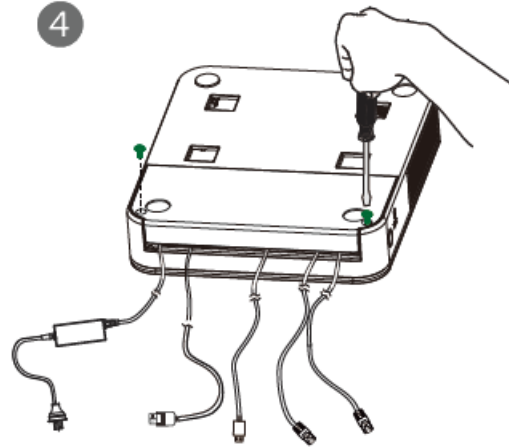
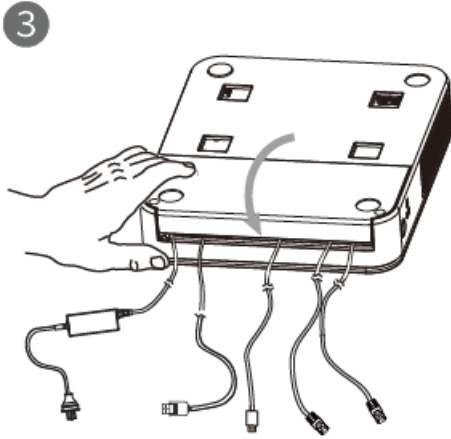
- ① Power on/off Button
- ② HDD LED Indicator
- ③ Reset
- ④ DC19V/4.74A: connect to the power adapter.
- ⑤ HDMI Port: connect to displays.
- ⑥ USB Port: connect to USB devices.
- ⑦ Internet Port
- ⑧ MTouch Port: connect to MTouch II.



### MCore Pro Connection



• Press the buttons on both sides to open



- Fasten the MCore Pro with machine screws

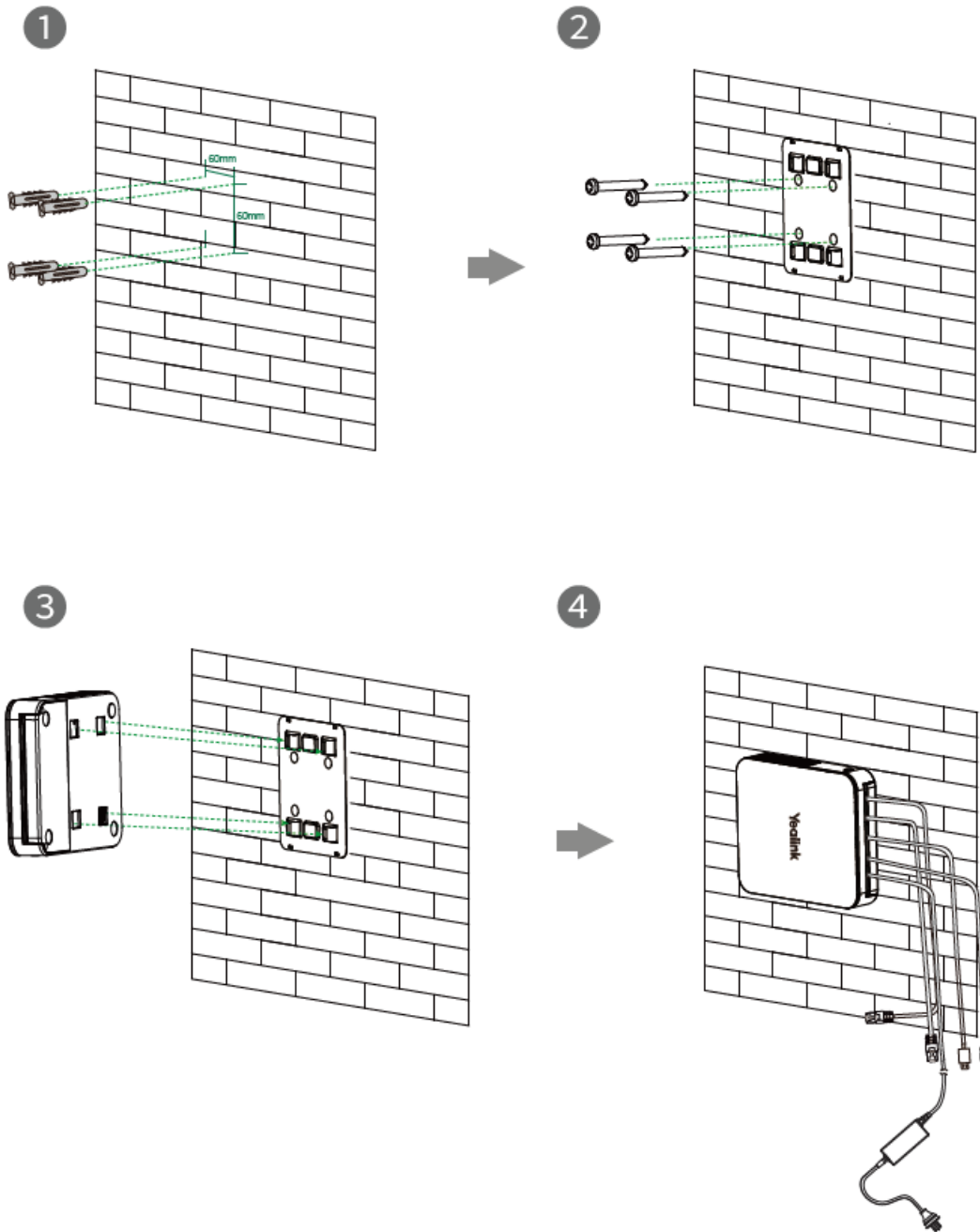
**NOTE**

When starting up the MCore Pro for the first time, you need to connect a mouse to complete the initial configuration. We recommend that you use the wireless mouse and keyboard kit.

MCore Pro has an integrated cable lock feature, and no additional cable lock box is needed to lock the cable.

When the MCore Pro works with Microsoft Teams Rooms, we recommend setting the output resolution of MCore Pro to 1080P. If it cannot be configured normally, please purchase an EDID emulator.

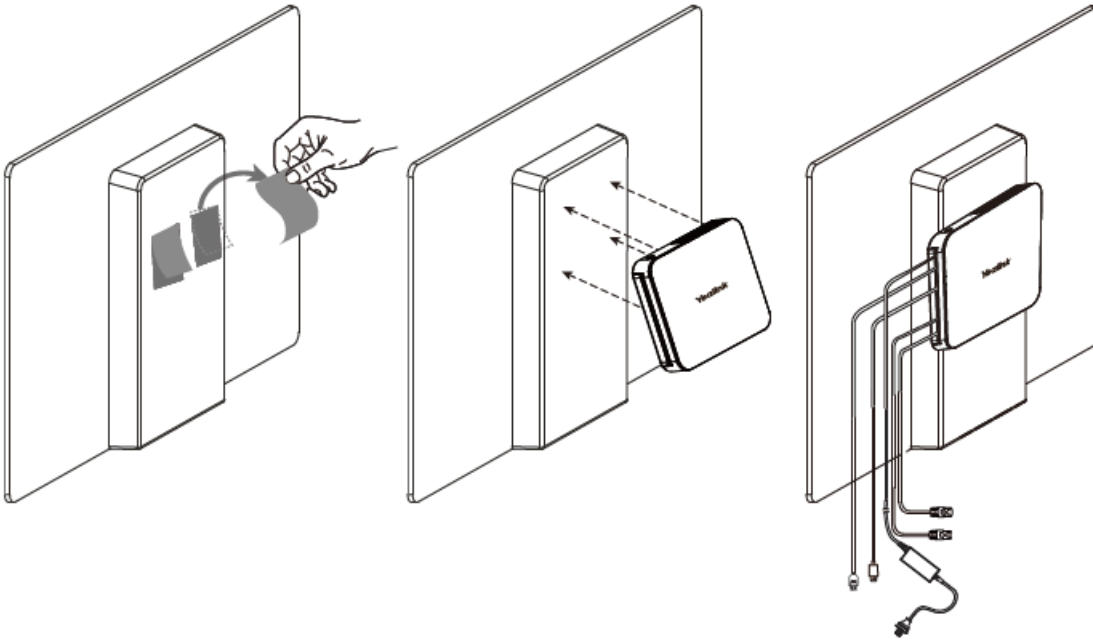
## Install MCore Pro



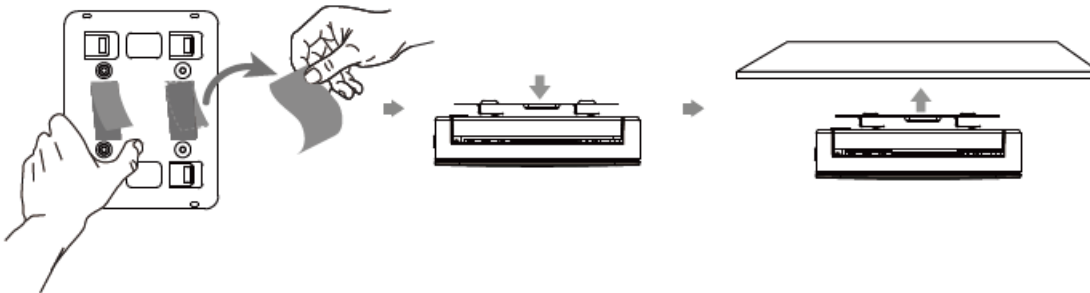
**NOTE**

Before mounting the bracket, you need to confirm the direction of the MCore Pro installation. Once the bracket is mounted, the installation direction of the MCore Pro cannot be changed.

- Mount on the TV



- Stick to the Table



**NOTE**

You can stick the MCore Pro on the top, sides or bottom of the table.