

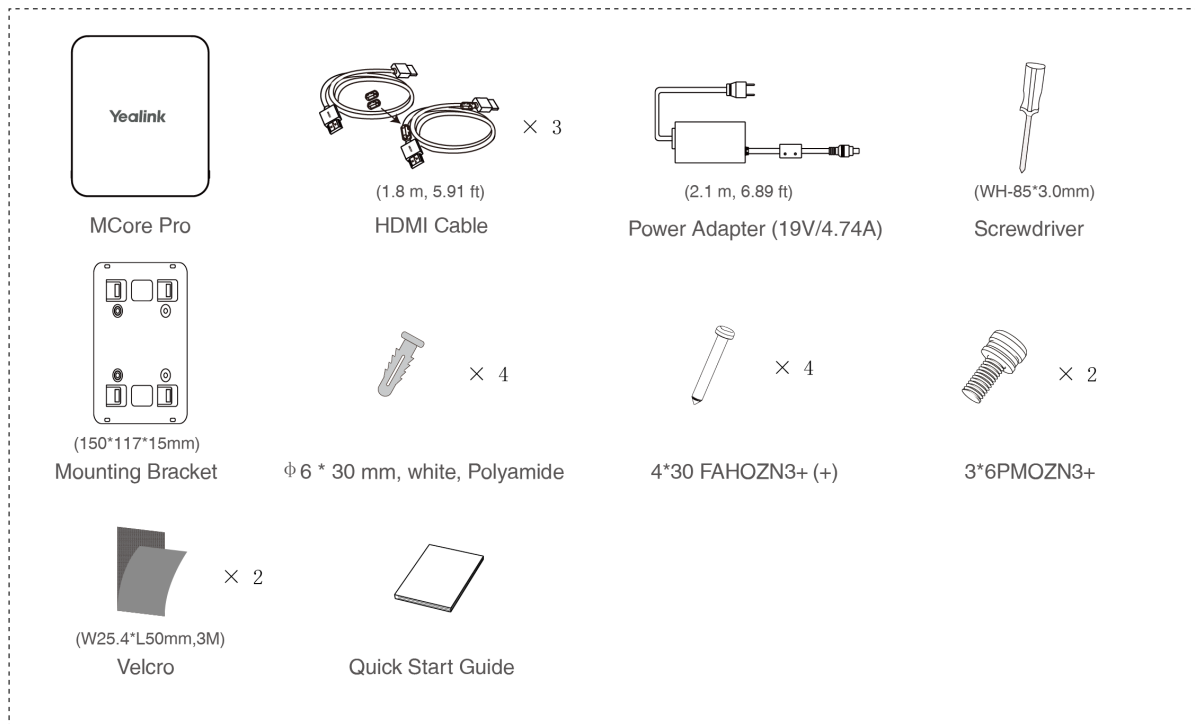
# MVC S60-C5-000

For the operation video, please refer to [MVCS60 Unboxing](#).

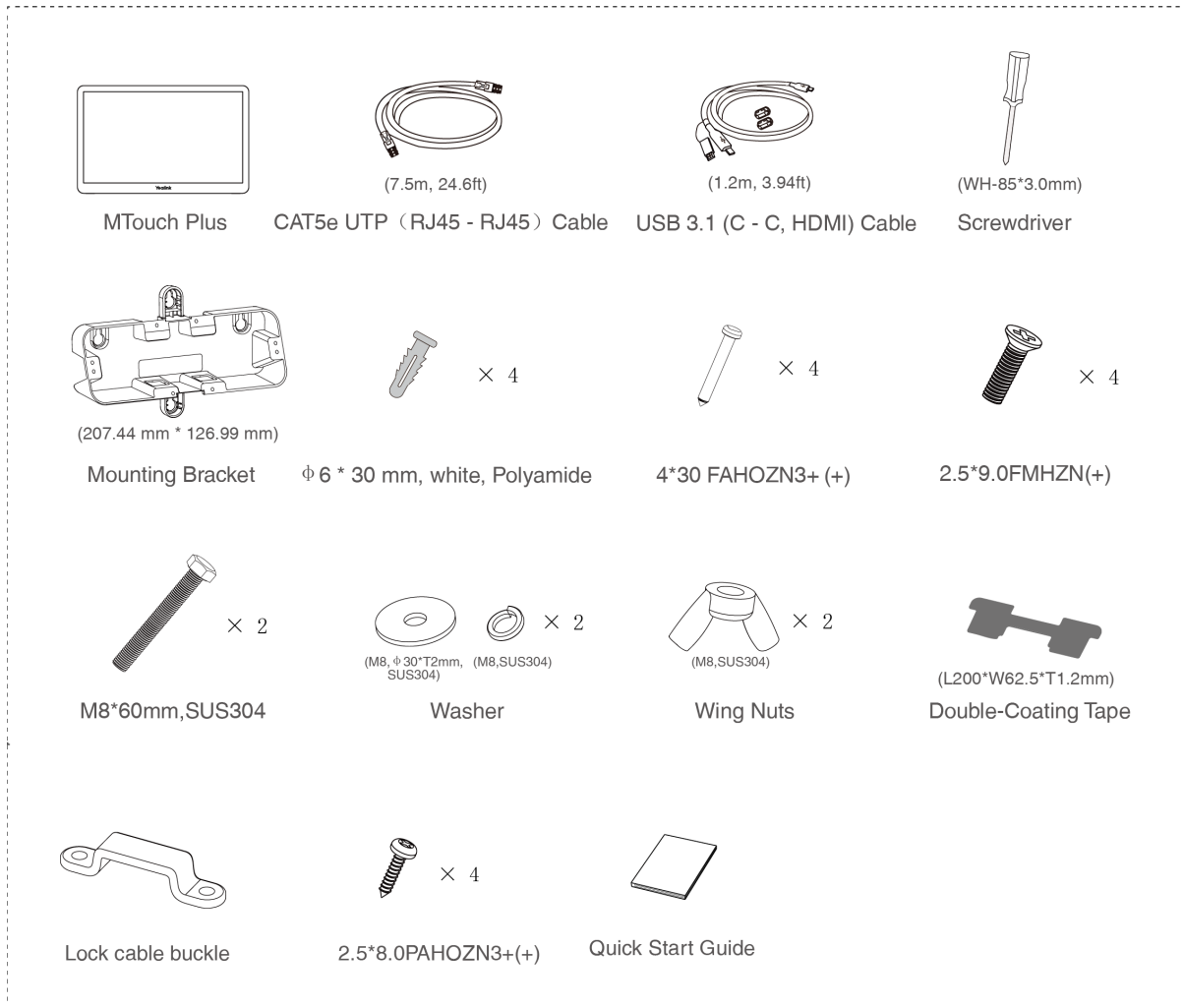
## Minimum Requirements

- A display connected to MCore Pro (not included).
- A Microsoft Teams Rooms or Skype® for Business account (not included).
- Wired network environment (not included).

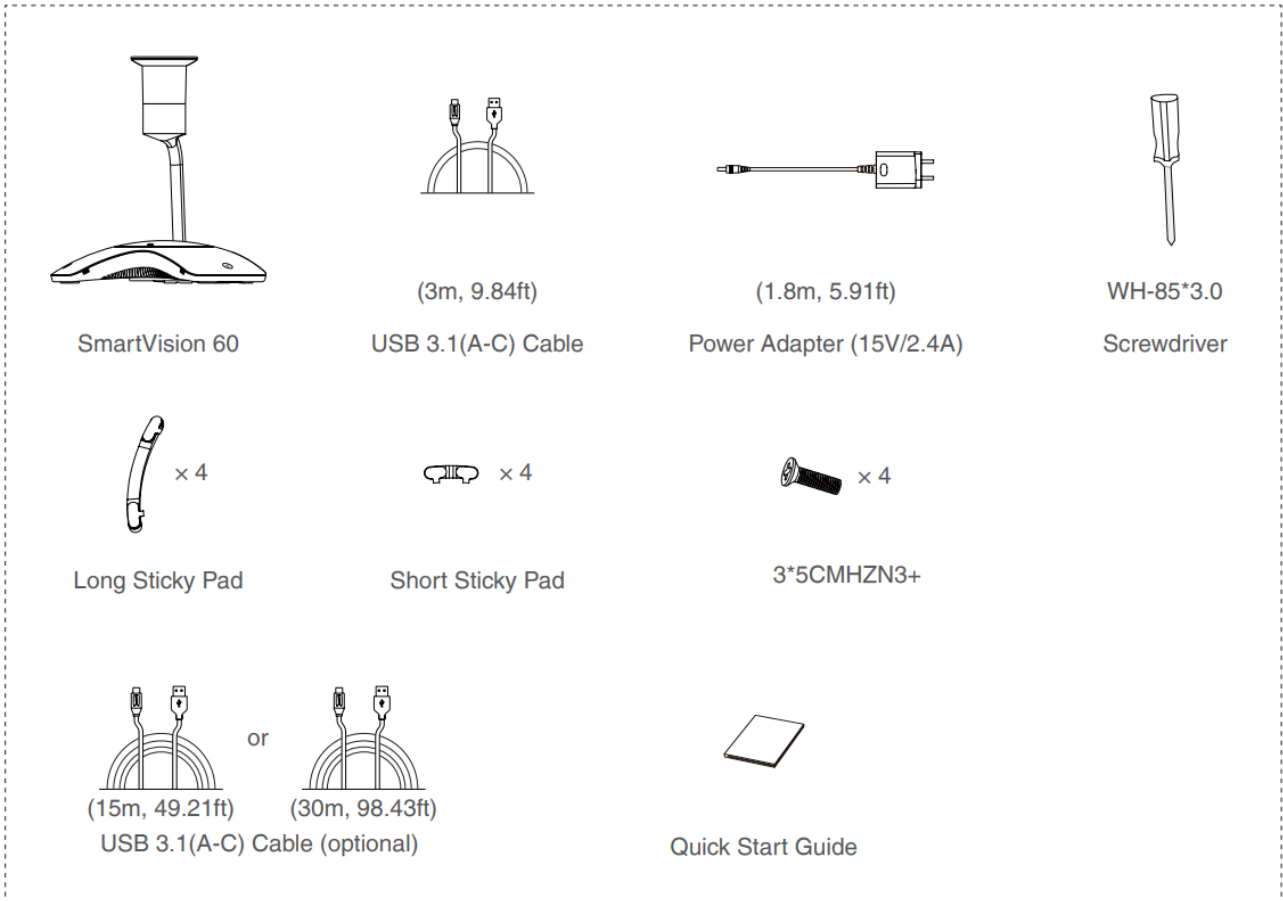
## Package Contents



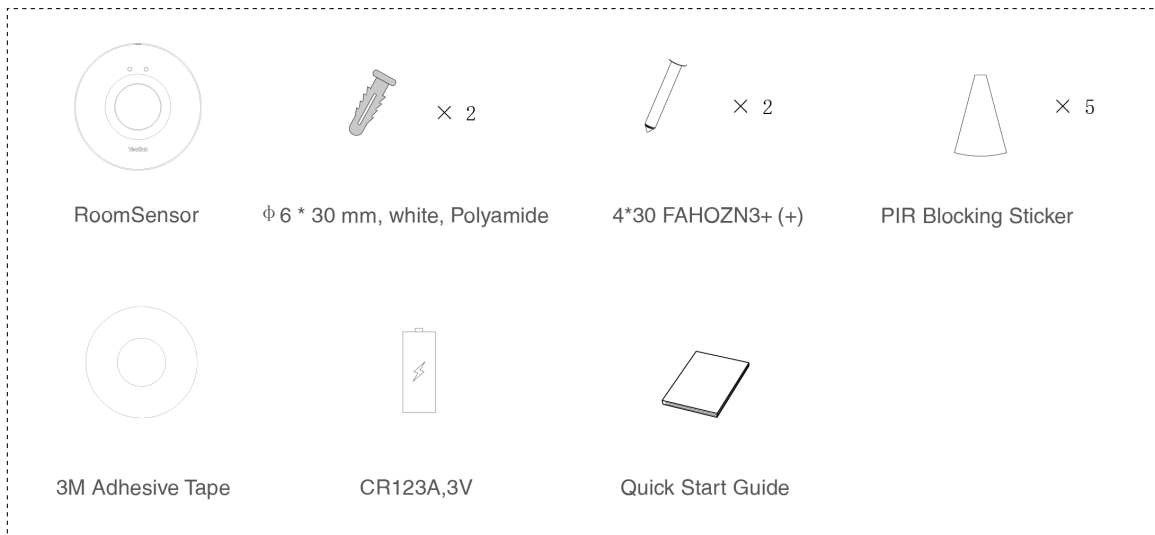
## MCore Pro Package



## MTouch Plus Package



## SmartVision 60

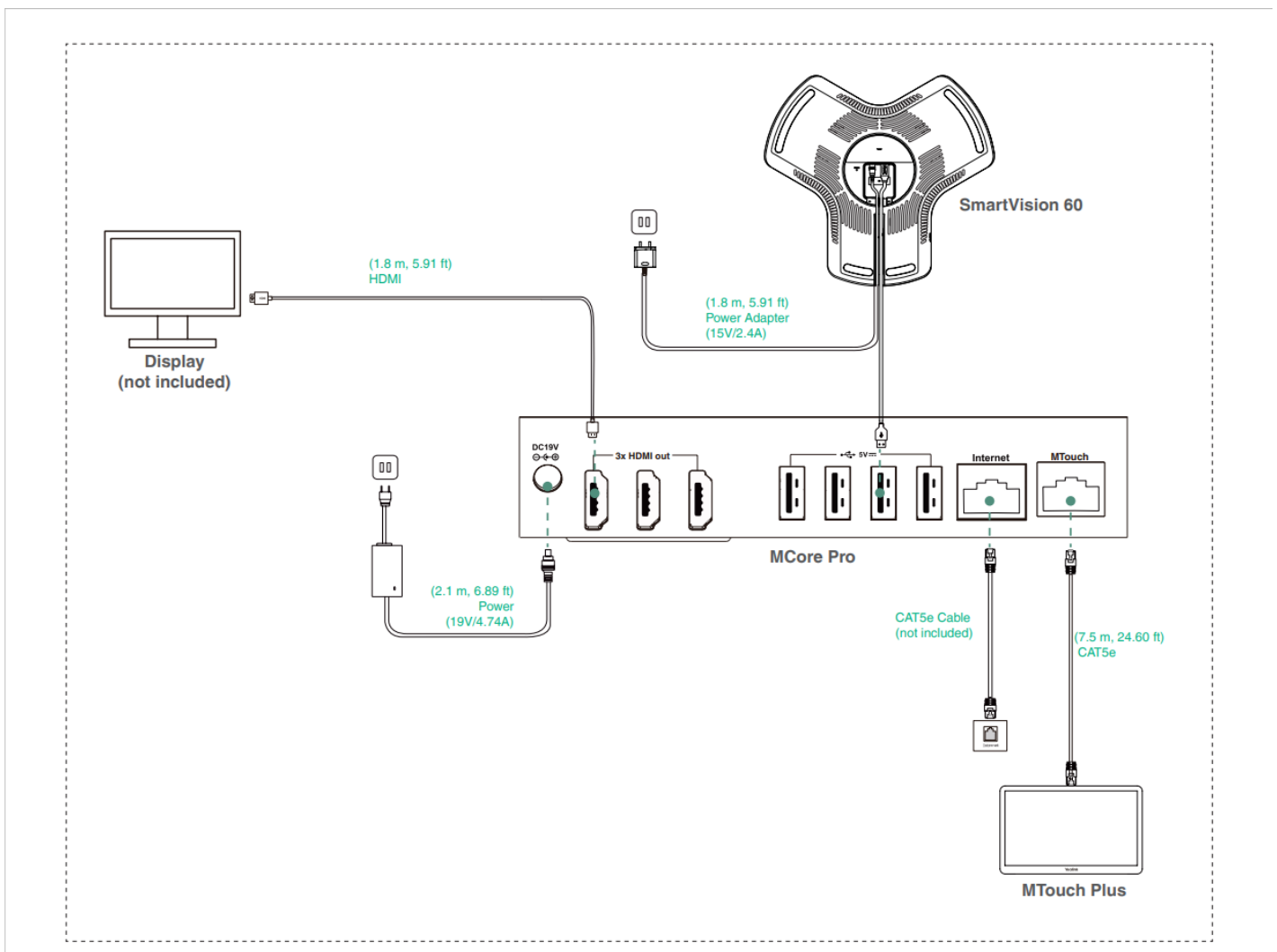


## RoomSensor Package

### Install MVC S60-C5-000

- MCore Pro supports: mount on the wall, mount on the TV, stick to the table.
- MTouch Plus supports: put on a table, paste on a table, fixed on a table, mount on the wall.
- SmartVision 60 supports: put on a table, paste on a table.
- RoomSensor supports: mount on the ceiling, mount on the wall.
- Install and deploy the accessories in the system according to the environment and actual needs. For how to install and deploy, please refer to the quick start guide of each product.

### Connect MVC S60-C5-000



**NOTE**

- When starting up the system for the first time, you need to connect a mouse to complete the initial configuration. We recommend using the wireless mouse and keyboard kit.
- If MCore Pro is deployed on the TV side (away from the conference table), you need to purchase the 15m/30m USB cable mentioned in the above package separately.
- Not included accessories requirements:
  - Display: Resolution of 1080p or higher and with an HDMI port.
  - Ethernet cable: CAT5e or higher ethernet cable.

## Initial Setup

1. Press the power button on the bottom left of MCore Pro, and the Microsoft Windows 10 IoT Enterprise Edition operating system will be automatically loaded after starting MCore Pro.

**NOTE**

When starting up the system for the first time, you need to connect a mouse to complete the initial configuration. We recommend using the wireless mouse and keyboard kit.

After the system is initialized, you can use MTouch Plus to complete the system login and settings, and the device will automatically start the Microsoft Teams conference system application and enter the setting page.

2. Select the check box on the **EULA** page, and then tap **Next**.
3. Enter the account, the password on the **Account** page, and then tap **Next**. Supports Microsoft Teams Rooms or Skype® for Business accounts.
4. On the **Advanced** page, configure the domain and tap **Next**.
5. Tap **Finish** to complete the setup wizard.

## Features

### Wireless Sharing

1. Connect the WPP30 to the USB port of the MTouch Plus.  
When pairing, the LED indicator of WPP30 is orange. And the pairing is successful, the LED indicator turns green breathing light.
2. Connect the paired WPP30 to the USB-A/USB-C port on your PC.
3. On the WPP30, press the presentation button to share the full screen.



### Pair with a RoomSensor

1. Switch account from Skype to Admin.
2. Open Yealink RoomConnect Software from Desktop.
3. Go to **MTouch Plus > Sensor**.
4. Add sensor. Select the right sensor to pair.

Remove the back cover of RoomSensor, you will see its name on the top. Then select accordingly.

#### **NOTE**

- A MTouch Plus can be paired with one RoomSensor at most.
- The distance between MTouch Plus and RoomSensor needs to be within 20m.

### Supported Accessories

For the compatible devices and the maximum number of compatible devices, please refer to [Teams Room Accessories Compatibility Lists](#).